



*Water for the Next Century.*

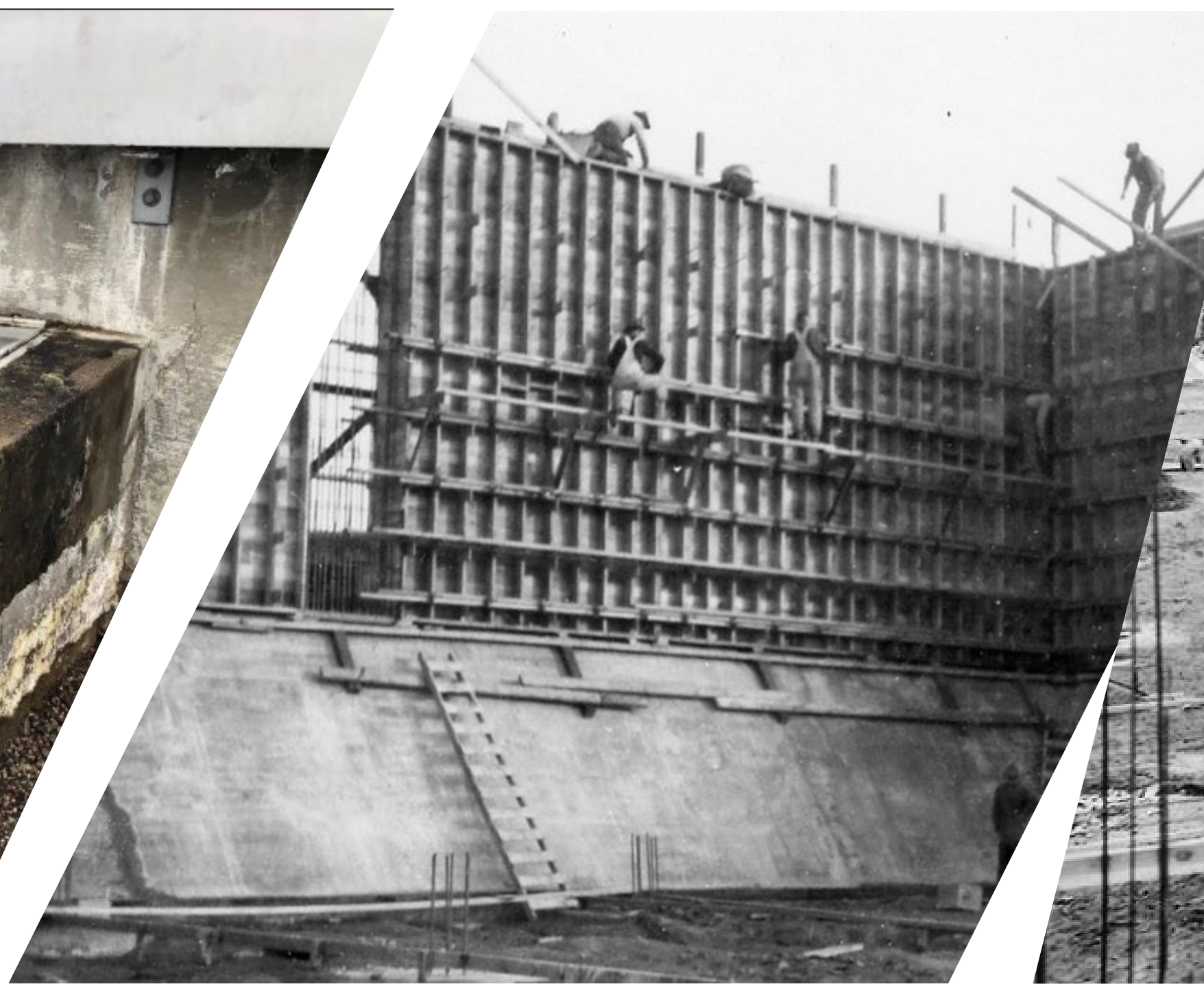
# Capital Hill Reservoir Replacement Project



## Welcome to the Summer 2026 Open House

Please sign in and grab a snack.

Take a look at the displays. Project team members are available to answer questions! We will have a short presentation at 5:15 p.m.



**Exhaustive evaluations have demonstrated the existing aging reservoirs are at significant risk in even a moderate seismic event.**



*Water for the Next Century.*

## Capital Hill Reservoir Replacement Project

The Capital Hill Reservoir site is critical for the water supply for Medford and our Partner Cities.

### WHY HERE?

- Distribution piping hub for entire system (expensive and impractical to relocate).
- Elevation required for the reservoirs to supply the existing system by gravity (difficult to find other land).
- Medford Water owns the property and has space to expand for the future.

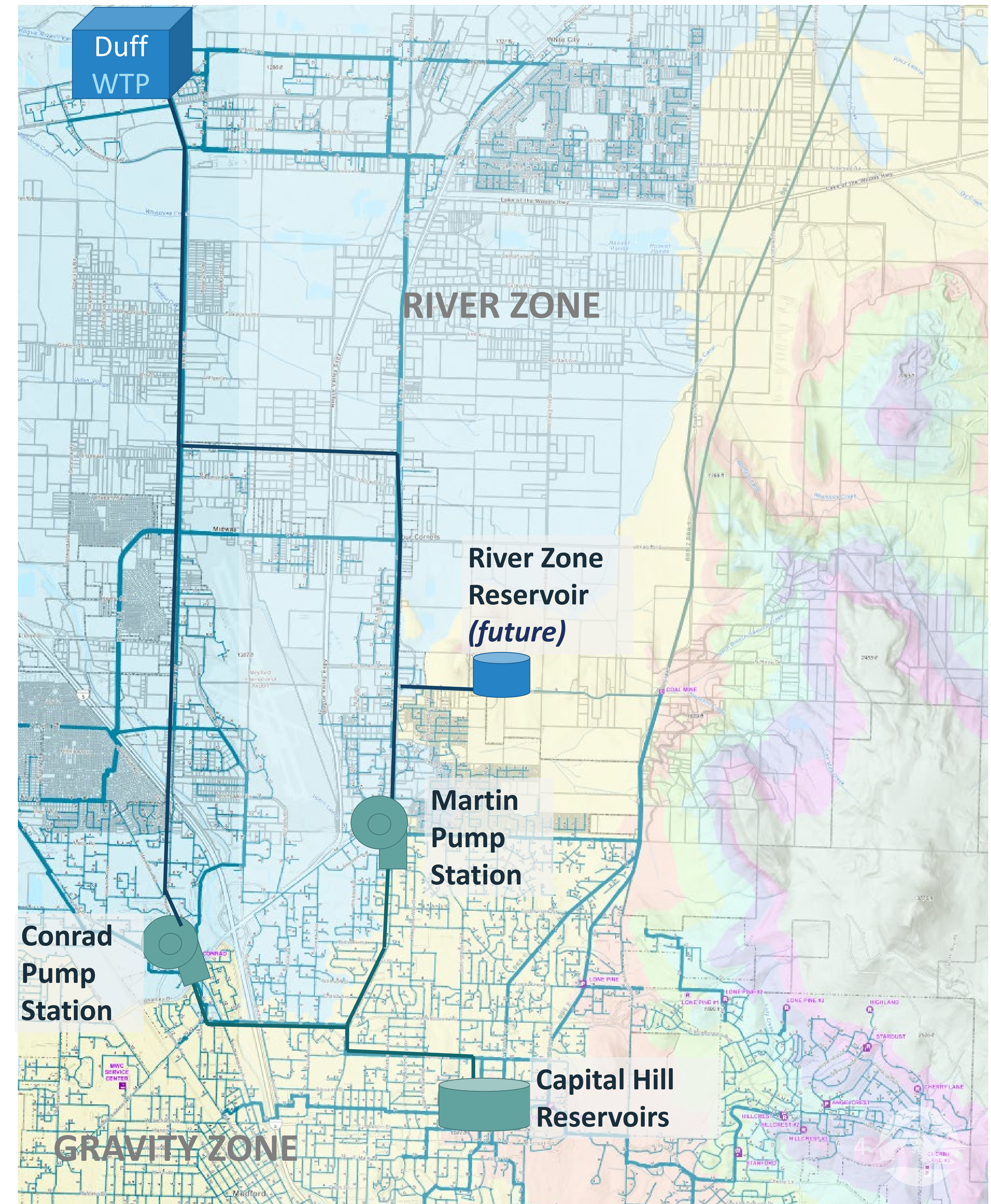


# Rogue Valley Water Supply Resiliency Program

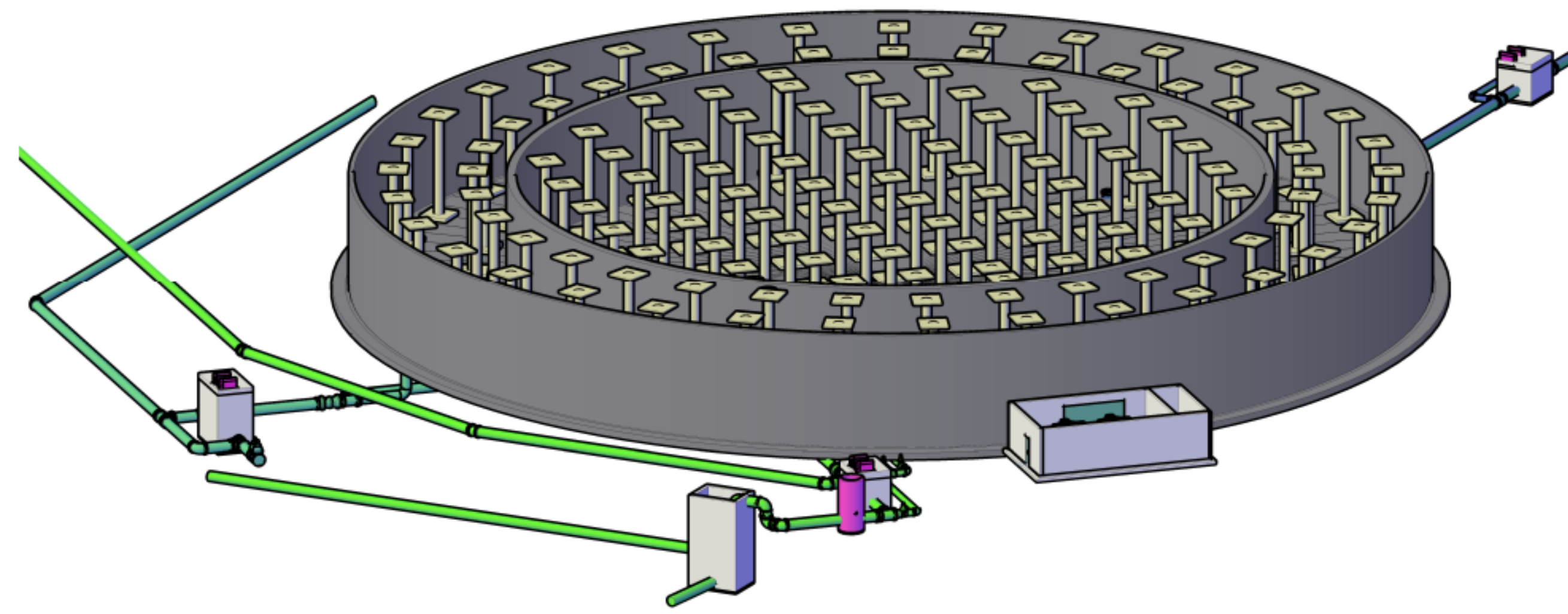
- Medford Water's 10-Year Goal to Improve Water System "Backbone"

## Benefits

- Increased system resiliency
- Increased capacity
- Water for the next **100** years
- Faster recovery after natural hazard events



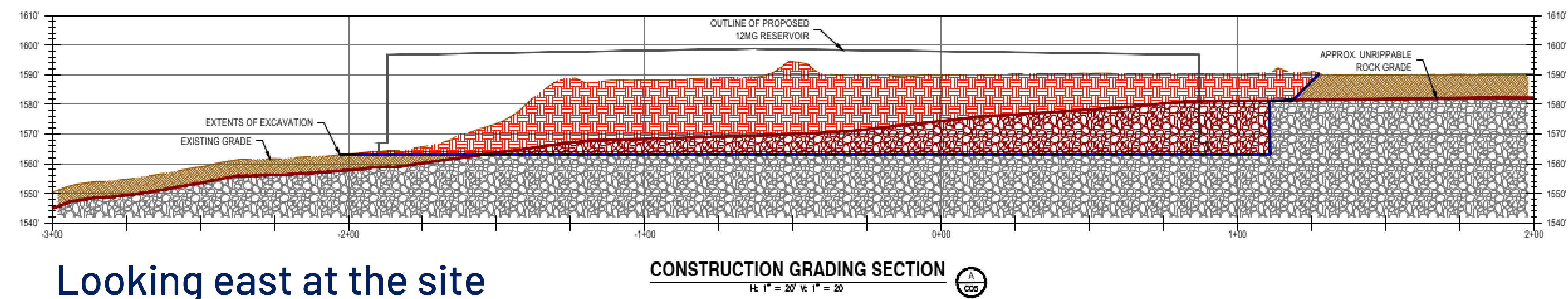
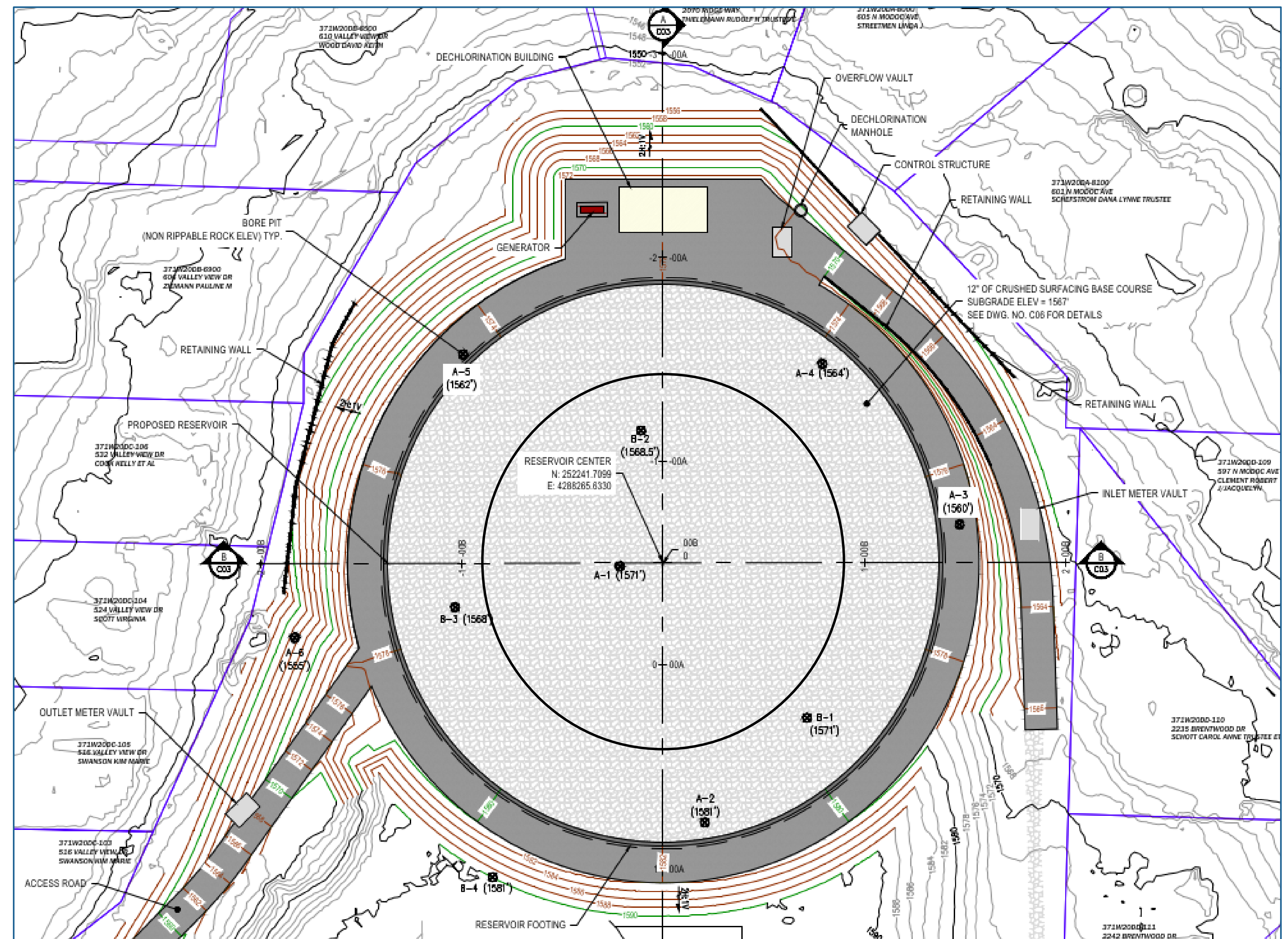
# Reservoir Design Details

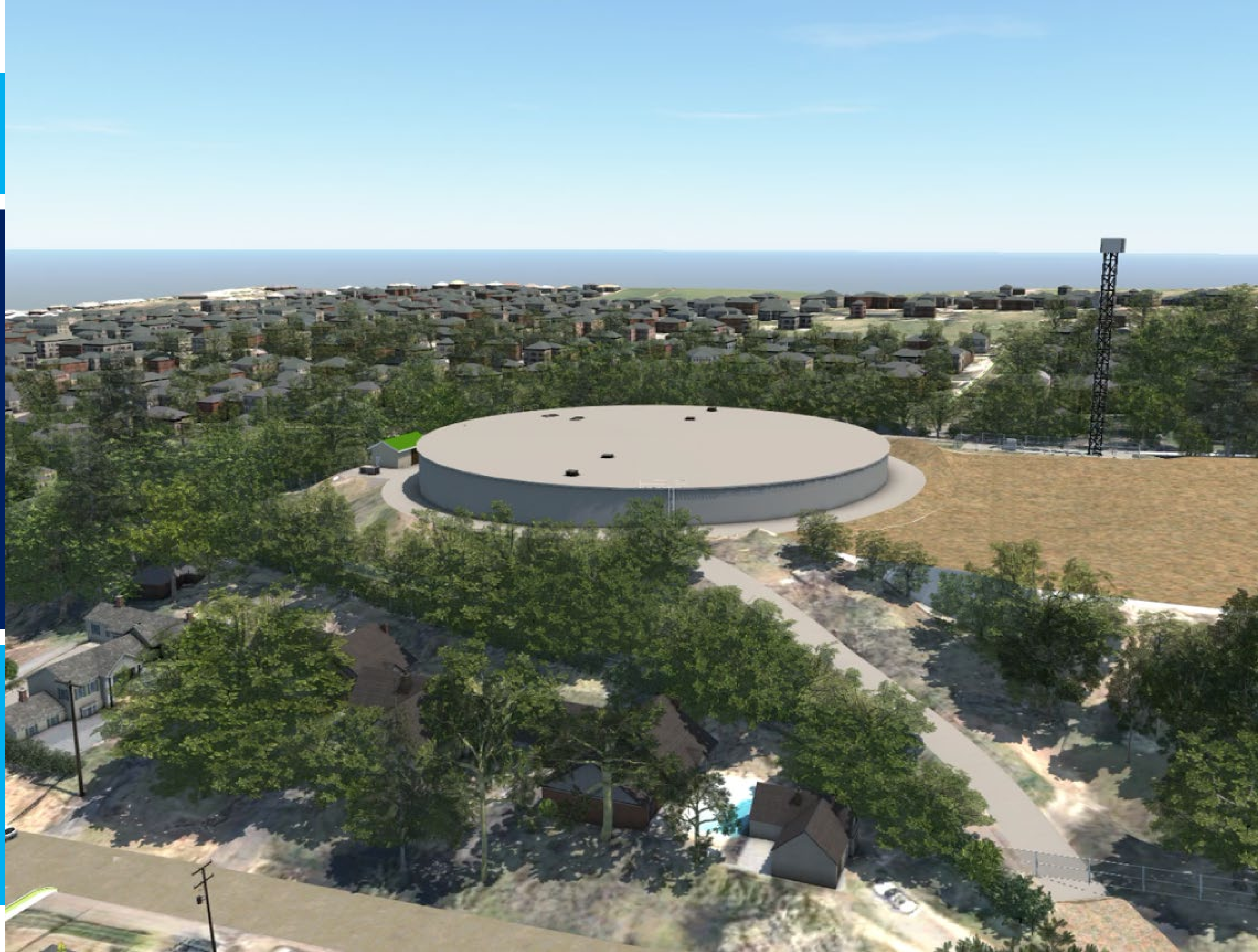


## Design is 100% complete

The new reservoir will be:

- 2 tanks (cells) under one roof.
- Located farther north on the site than the current tanks but fully within the site property.
- 31' height. In most places only 10-15' will be visible above ground.
- 280' across (diameter).

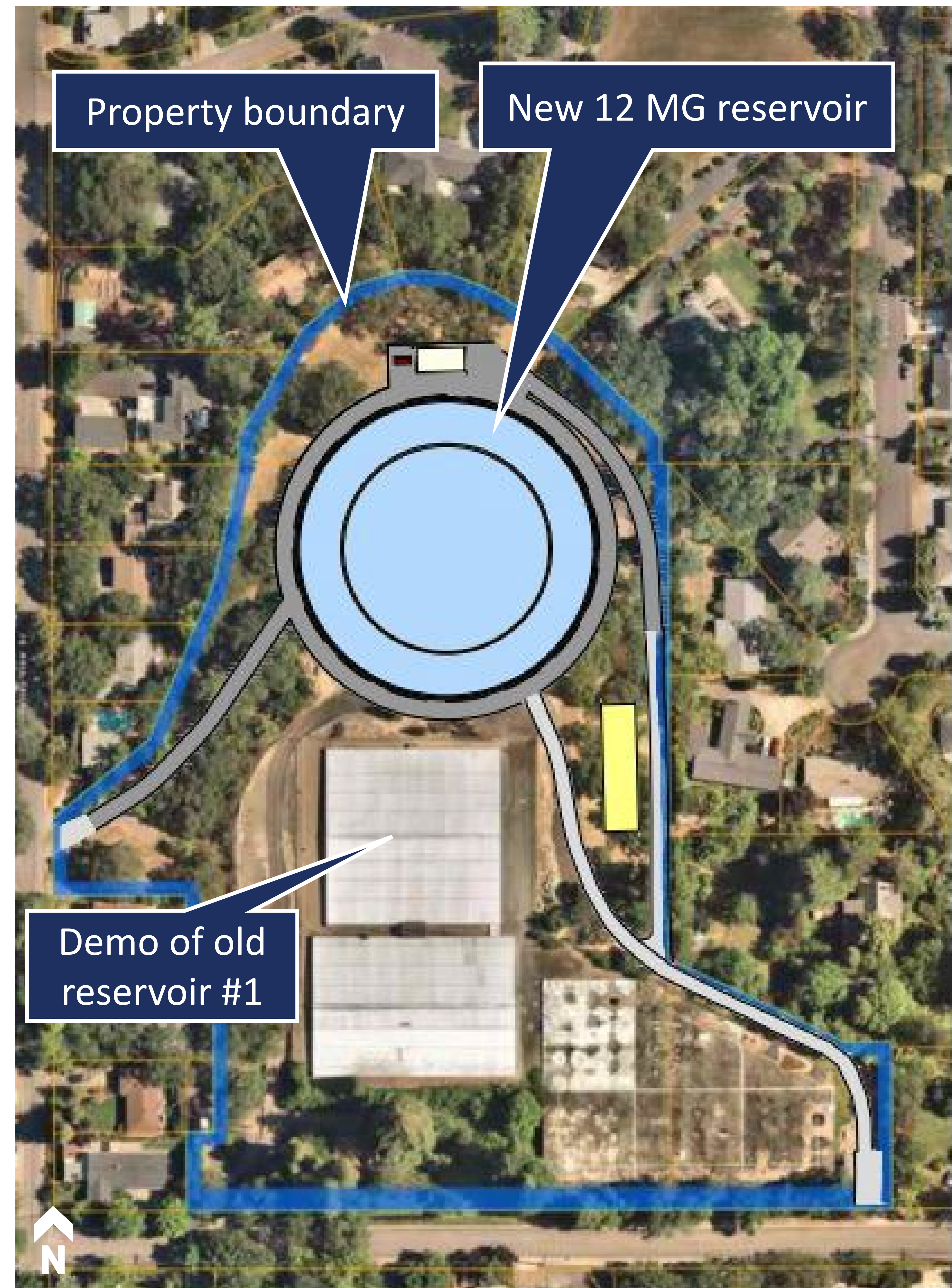




# CAPITAL HILL RESERVOIR REPLACEMENT PROJECT

## NEXT STEPS

1. Demolish old reservoir #1
2. Tree removal on north side
3. Modify yard piping
4. Excavation
5. Construct new 12-million-gallon reservoir (1 year)
6. Site restoration and remove "cottage"







# Project Impacts

While the goal of the project team is to minimize impacts on the local community, any construction project of this magnitude and importance will have some temporary impacts such as noise and truck traffic.



## Mitigation efforts include:

- Contractors are prohibited from accessing the site from Valley View or traveling east out of the property on Capital Avenue. This will be strictly enforced.
- Onsite watering to minimize dust.
- Partial site screening at property boundary to limit visibility.

Any concerns can be directed to [capitalhill@medfordwater.org](mailto:capitalhill@medfordwater.org) or call 541-774-2424.

*Reminder: This will be an active construction site. No public access is allowed at Capital Hill Reservoir.*



## Approved Haul Route

Trucks will need to access the site from Capital Avenue. Travel to and from the site will be on **Capital Avenue to Sunrise Avenue.**



At times traffic flow will need to be modified to allow large trucks access. This may include:

- Short term closure of Valley View at Capital Ave.
- On-street parking will be closed on the north side of Capital Ave. during construction.
- Limited modification to on-street parking on south side of Capital Ave.

